

# RTL TRADES

## OCT 22 NEWSLETTER



Updates on the Company's focus and recent projects.



### **REAL ESTATE & BODY CORPORATE PLUMBING, ELECTRICAL, ROOFING AND HANDYMAN SERVICES**

Recently, RTL has been building strong relationships with Body Corporates and Real Estate agencies. With the current housing and rental market the way it is, our dedicated Managers have enough on their hands so RTL is committed to providing great service with lightning fast turnaround times on quotes and emergency plumbing, electrical works and roof repairs.

### **DID YOU KNOW?**

\*If you have a leaking tap that drips twice per minute, you'll waste over a gallon of water in a week?

\*The word 'plumber' comes from the Latin word "plumbum" which means 'lead'



PLUMBING



ELECTRICAL



HANDYMAN



ROOFING

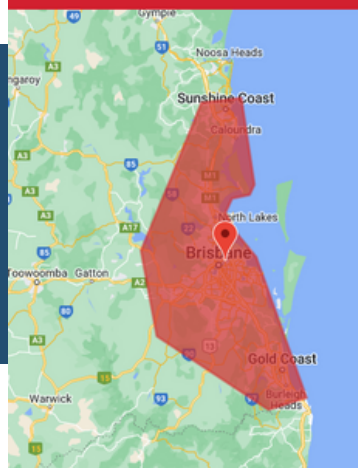


BUILDING

## **We recommend:**

Preventative maintenance is carried out while systems are functioning to ensure that it is working at its' optimum capacity. This will also ensure that the chances of unexpected equipment breakdown are kept to a minimum. In short, regular Electrical and Plumbing maintenance is key to your equipment's longevity.

### **SERVICE AREAS**



One area where preventative maintenance can prove invaluable is roofing - simply having your gutters cleaned out regularly and your roof checked over, especially before our typical storm season begins, can prevent a lot of heartache during the more violent weather we have seen of late!

# MAJOR UPCOMING PROJECT

## Babylon - 145 Eagle St

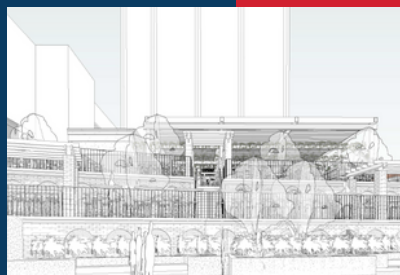
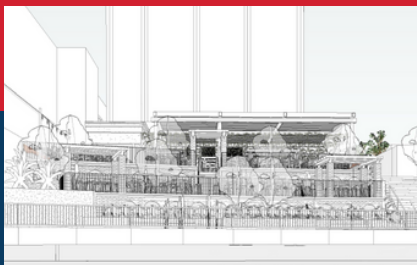
We are proud to present this ongoing project that we are working on with Hammersmith Construction.



The Development Application number for this project is A005087188.

### Scope of works proposed

The development involves an internal fit-out of the ground level tenancy for a restaurant and hotel, and the establishment of an outdoor dining area and bar for the restaurant and hotel within the terraced riverfront area.



### This project will:

1. Refurbish the former Esquire tenancy for use as a Food and Drink Outlet and Hotel.
2. Reuse existing paved terraced area for a Food and Drink Outlet and Hotel.
3. Create a new terrace over existing stairs between the existing terrace and Riverwalk. This will be used as a Food and Drink Outlet and Hotel.
4. Provide lighting to enliven the space at night with spectacular views across the river and to the Story Bridge.

# TRADE NEWS

## PLUMBING

Recently there has been an increase in sewer blockage and drainage issues for our Shopping Centre clients.

These issues have led to major issues for some and further problem areas for others! By using electric eels, high pressure jet blasting and even vacuum excavation if required,

our team of highly trained and experienced professionals will have your blocked drain cleared quickly with absolutely no guesswork involved.

To ensure that you are not stuck in the position where the problem could cost you more than it needs to, why not have our team come out and carry out a preventative inspection or leak detection works today.



**CONTACT US TODAY  
1300 000 785**

**IF YOU WOULD LIKE TO SEE  
WHAT WE CAN DO FOR YOU,  
CONTACT US TO DISCUSS - WE  
DO UNDERSTAND A FITOUT IS A  
REFLECTION OF YOUR BRAND  
AND MUST EMBODY THE  
QUALITY OF YOUR OFFERING**



## BUILDING LICENCE

One of our recent focuses has been building our carpentry and fit out team due to recently gaining our Building Licence.

A number of recent fit-outs that we are proud of are in Salons which have turned out looking amazing and our clients are extremely impressed!